

Robert Mills – Grattan Street Office

Melbourne, Victoria, Australia

Robert Mills Architect Pty Ltd



1

This office was strategically designed to showcase the architect's design vision of pure form and function. The clean open-plan lines and neutral finishes create an environment to inspire creativity.

The Grattan Street building was transformed from a derelict factory to a single warehouse space. The predominant features of the building are a 332-square-metre ground-floor open-plan office, reception and meeting area, and a 62-square-metre mezzanine, which functions as a private office and second meeting room.

Clear zones are indicated by the subtle use of partitions and low-level walls that encourage a visual flow throughout the space, while not interrupting the existing vernacular of the building.

A palette of dark timber floors, white walls and feature lighting create a neutral backdrop. Handpicked indigenous Australian artworks add colour throughout the space. Quality fittings were carefully chosen to add texture and richness, transforming the space from a factory environment to a high-end boutique-style office.

By cleverly altering the interior space and existing building fabric, features of the original architecture – such as the clerestory windows, trusses and the mezzanine level – were preserved. The natural light from the clerestory windows is drawn into the open-plan space and the mezzanine level, while the stunning 1960s terrazzo staircase was retained to link the ground and first floors. The project provided a sustainable solution that minimised energy consumption while enhancing the quality of the interior.

1 Reception

2 Open-plan workspace



2

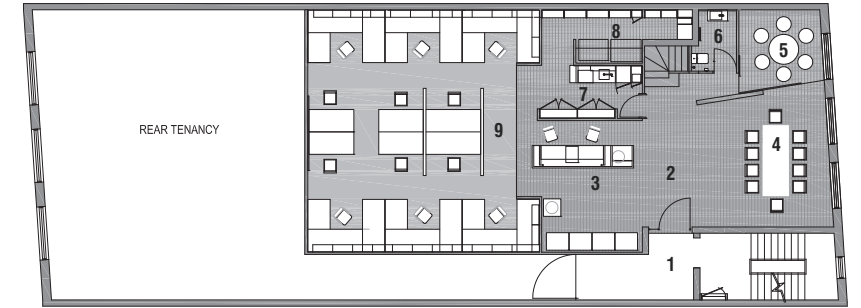


3

3 Library
 4 Ground-floor meeting space
 5 Ground floor plan
 6 Mezzanine workspace overlooking the ground floor
 Photography: Shannon McGrath



4



5
 1 Entry 4 Conference 7 Kitchen
 2 Waiting room 5 Meeting room 8 Print room
 3 Reception 6 Toilet 9 General office



6

Bayside Project Management Office

Melbourne, Victoria, Australia

Robert Mills Architect Pty Ltd

The client is a sophisticated residential developer in the business of creating homes and promoting particular lifestyles. Its philosophy is grounded in excellence, with quality construction and sound investment value. The brief was to embody these principles in a physical form.

The design needed to reflect the dichotomy of home and industry and showcase the client's values. With this in mind, the architect forged a link between the sophisticated commercial interior space and a warm residential environment representative of the client's product.

The idea behind this project was to bring together two restrictive areas and create one that had a sense of open space while retaining some intimacy.

Philosophically, the design is all about balance. Chiaroscuro effects create interest and the interplay of light and dark with hard and soft surfaces allows a petite workspace to expand and contract.

The design uses a sophisticated mixture of warm materials and textures. The palette of dark timber, white walls and feature lighting creates a dramatic atmosphere, transforming the space into a boutique-style office, symbolic of the client's work.

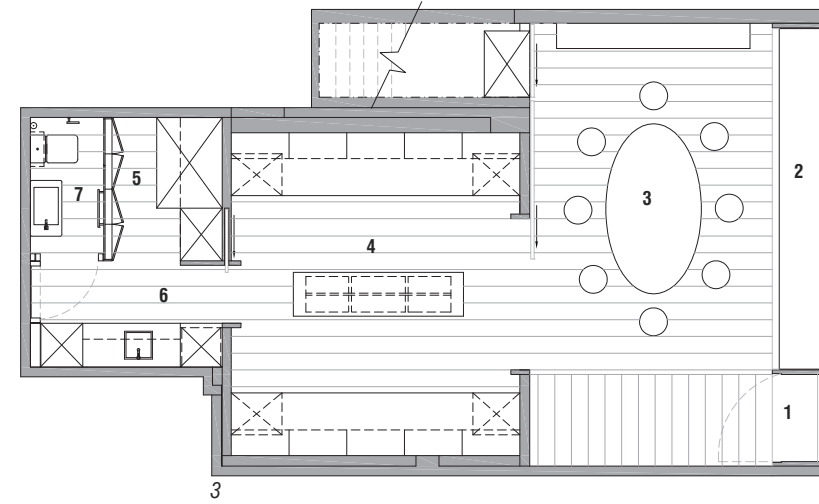
The visual flow is continuous throughout the office with the clever use of low-level shelving and a sliding partition wall. The space is confined minimising the use of heating and cooling. Track lighting allows the user to apply lighting to different workable areas throughout the office, conserving energy.

- 1 Workspace
- 2 Meeting space
- 3 Ground floor plan
- 4 Open-plan office converts into two separate areas utilising a sliding wall partition

Photography: Shannon McGrath



1 2



- 1 Entry
- 2 Raised platform
- 3 Conference room
- 4 Workspace
- 5 Printing/copier area
- 6 Kitchen
- 7 Toilet



4